

PIANO
TRENTINO
TRILINGUE

8 9 10
MARZO
2018

FESTIVAL DELLE LINGUE ROVERETO

150 WORKSHOP
80 ENTI PARTECIPANTI



HONEY BEES and HONEYCOMB



Scuola primaria “M. H. Gandhi” di
Rovereto TN
Istituto comprensivo Rovereto
nord



percorso **CLIL**: 2012-2018

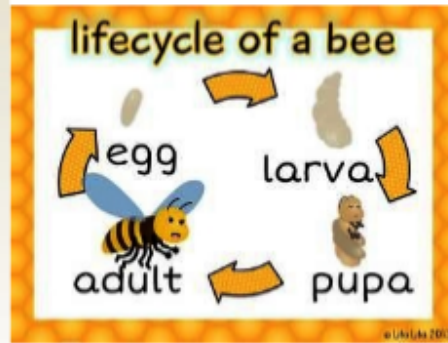
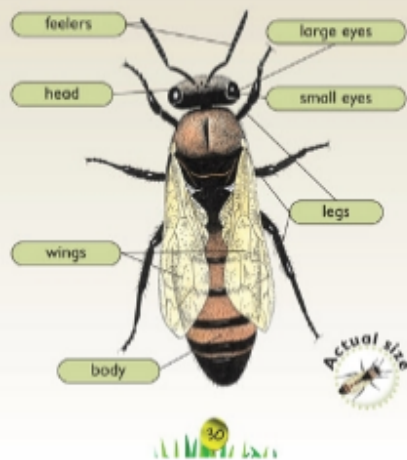
EDUCAZIONE ALL'IMMAGINE – MUSICA –
EDUCAZIONE MOTORIA

GEOGRAFIA – TECNOLOGIA – LABORATORI
OPZIONALI

<https://www.youtube.com/watch?v=dA05LOfPbIY>



BEES | Animals for children. Kids videos. Kindergarten | Preschool learning



- Honey bee is an **INSECT**. Most common types of bees are **Honey bees**: they produce honey!
- Honey bees live as large colonies in **honeycomb** structures built from **beeswax** called **hives**.
- Honey is made from the **nectar** and sweet deposits that bees collect from plants and trees. Honey is stored in **honeycomb** as a food source for the colony.
- Bees have 5 eyes, 6 legs, 2 antennae, 2 pairs of wings.
- It has a sting (ouch!) to defend itself - but when it stings the bee dies!!
- Bees have a long proboscis (type of tongue) that helps them to get the nectar out of flowers, they collect **pollen** in pollen baskets on their body.
- Worker bees collect pollen and nectar to feed the colony, they clean the hive, make the honey, take care of the eggs and feed the queen. The queen lays up to 1,500 eggs a day.
- Bees survive the winter by eating honey and keeping warm with the other bees.



The Hive



The HONEYCOMB



ANTENNAS

2

HEAD

4

WINGS

BODY

STING

5

EYES

HONEY BEE

6

LEGS

The Hive



- **BEE IS AN INSECT**
- **BEE CAN FLY**
- **BEE LIVES IN A BIG FAMILY**
- **BEE HOUSE IS CALLED HIVE**
- **BEE ROOMS ARE CALLED HONEYCOMB**
- **BEE PRODUCES HONEY**



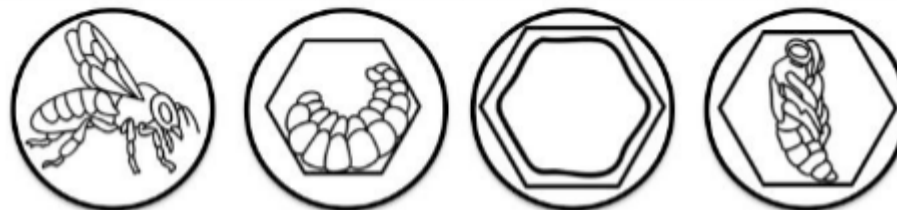
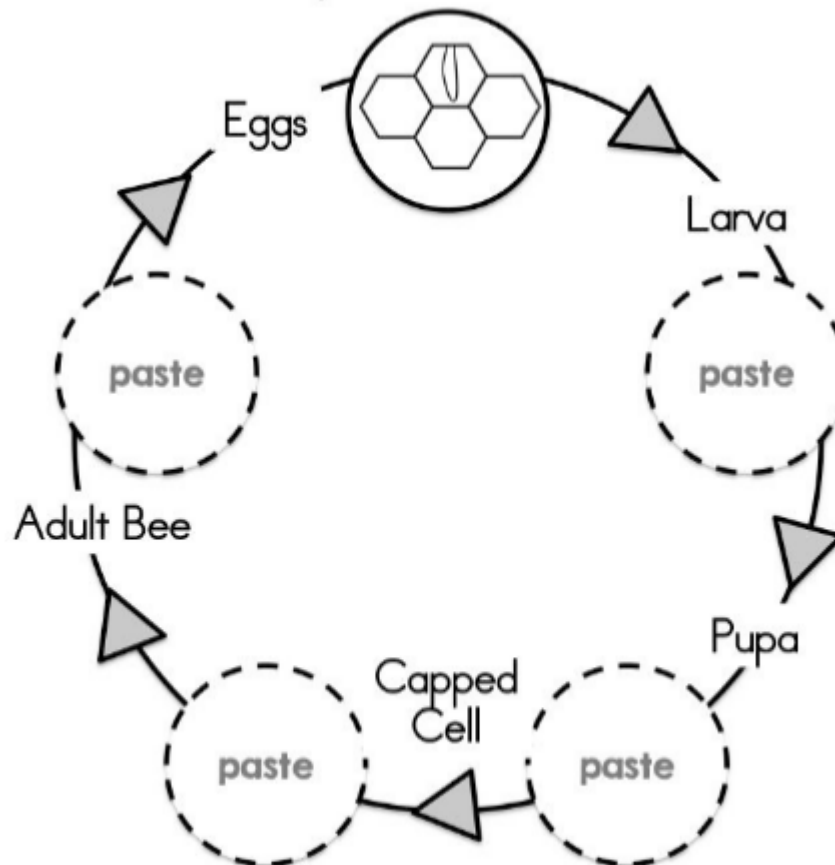
BEES COLLECT POLLEN AND MAKE HONEY

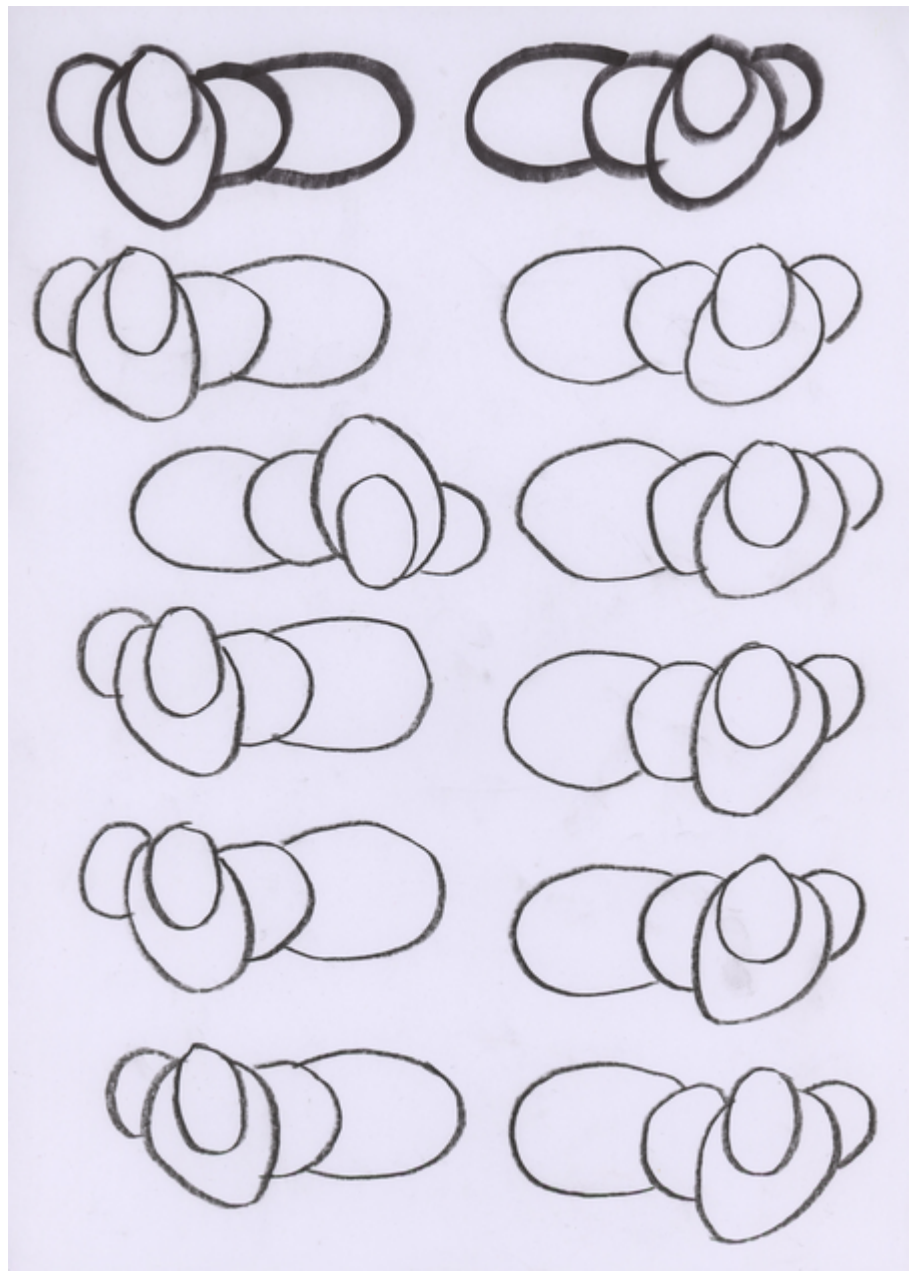
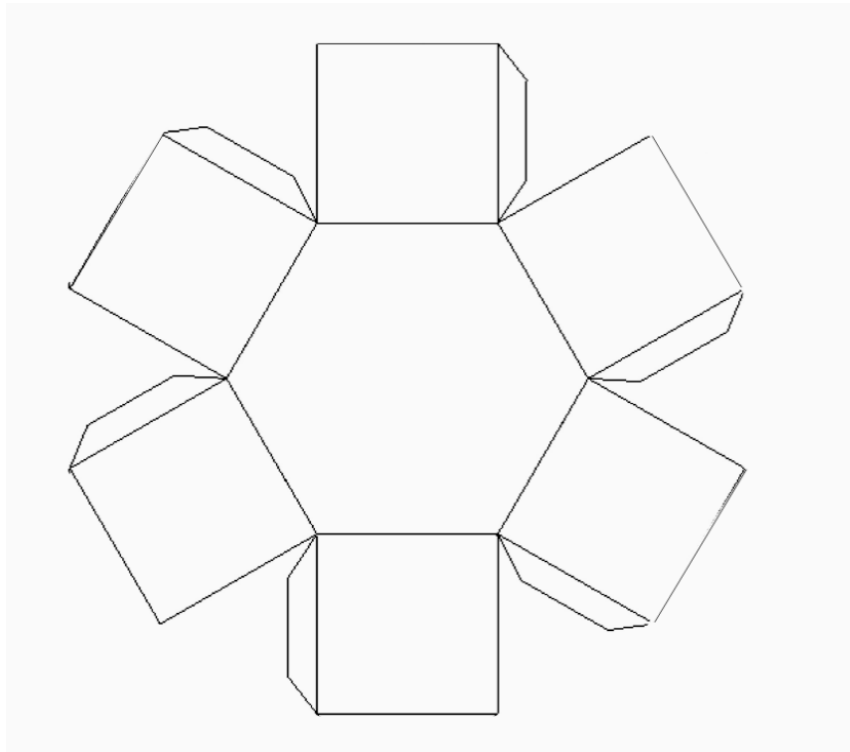


IN WINTER, BEES SLEEP AND EAT HONEY.

Life Cycle of a Bee

Cut out the pictures. Paste them in order.







**HONEY
BEES**

- 6 LEGS
- COLLECT POLLEN
- IMPORTANT
- MAKE HONEY
- A STING
- FLY
- A QUEEN
- SOCIAL INSECTS
- 2 PAIRS OF WINGS



**HONEY
BEES**

HAVE

ARE

HAVE

ARE

CAN

CAN